

# ProAir

## MODEL - EDV SERIES for Compressed Air Systems



This is designed to provide a solution for the automatic draining of filter bowls., Separators, dryers, receivers, drip legs and other compressed air system components where condensate and contaminants collect. The draining interval and discharge time can be adjusted according to all requirements.

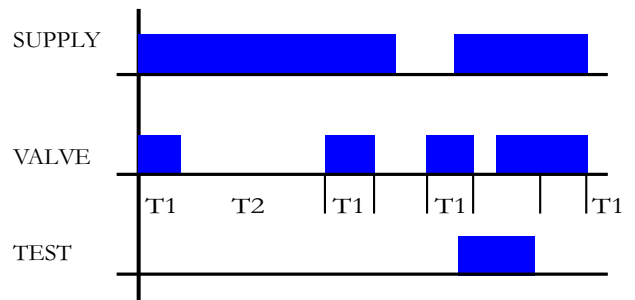
## ELECTRONIC DRAIN VALVE

Failure to carry out regular routine draining, either manually or by float - draining can have catastrophic results. Compressed air systems can become grossly contaminated and production schedules seriously disrupted just because a simple duty has been neglected.

ProAir Electronic Drain Valve eliminates the risk of human error and a possible costly aftermath by providing regular controlled system drainage, on time, every time-automatically.

The unit consist of a solid state timer coupled to solenoid valve and only requires a simple installation procedure. The unit is suitable for ALL compressed air system components (Aftercoolers, Dryers, Filters, Pressure vessels and Piping), regardless of their size or capacity-simply adjust the interval and discharge times to suit the particular compressed air system.

### FUNCTIONAL DIAGRAM



T1 drain open (on)  
T2 drain closed (off)

### SIZE-MODELS

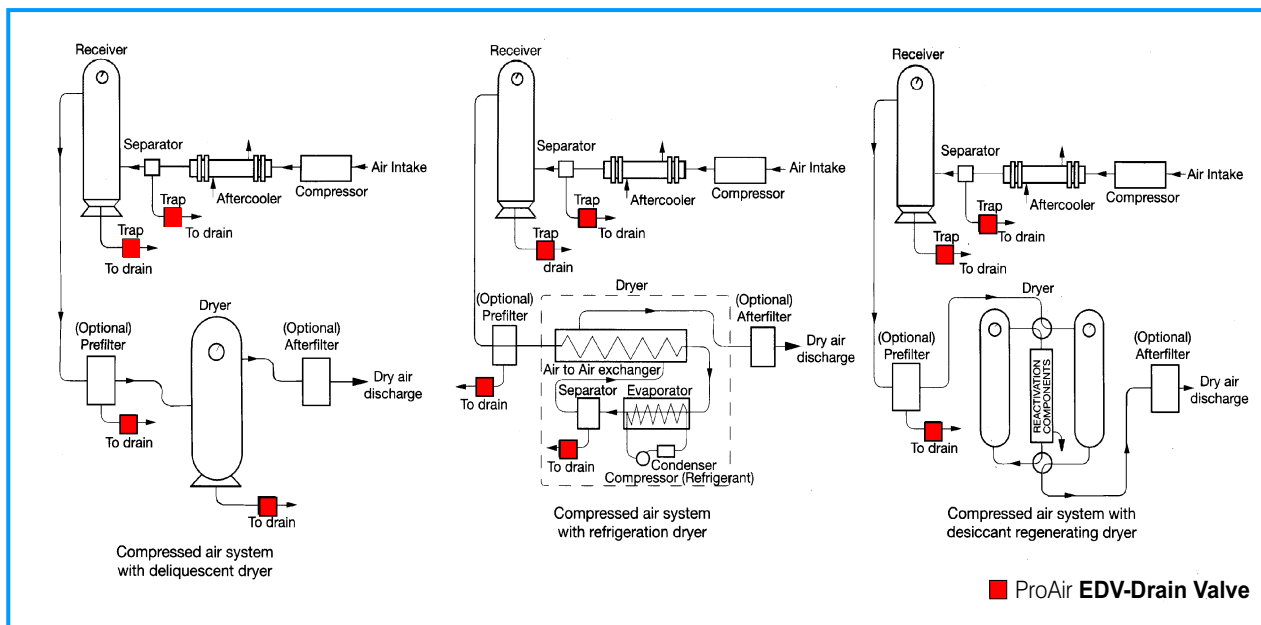
MODEL	PIPE SIZE	ORIFICE
EDV-02	6 mm (G 1/4")	2.4 mm
EDV-03	10mm (3/8)	2.4 mm
EDV-04	15 mm (G 1/2")	12 mm
EDV-06	20 mm (G 3/4")	19 mm
EDV-08	25 mm (G1")	25 mm

### Features

- Fully automatic - no maintenance
- One model for all applications
- Simple to install
- IP 65 enclosure
- Manual test switch

- Adjustable interval and discharge times
- depressurisation for filter cartridge replacement
- Solid-state timer for long life and reliability
- LED indicator show operational status.
- Rugged ABS fire resistant housing
- Small compact design

# WHERE TO INSTALL THE **ProAir** DRAIN VALVE



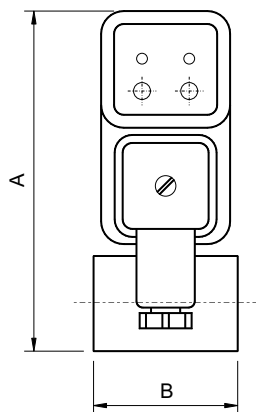
## SPECIFICATIONS

### TIMER

MANUAL TEST SWITCH	
INTERVAL TIME T2(1)	0.5-45 minutes
DISCHARGE TIME T1 (1)	0.5 - 10 seconds
SUPPLY VOLTAGE (2)	24 to 240 VAC/DC ±10%, 50 Hz.
CURRENT CONSUMPTION	4mA maximum
OPERATING TEMPERATURE	-40°C TO +60°C
ENVIRONMENTAL PROTECTION	IP 65 NEMA 4 when installed
CASE MATERIAL	ABS Plastic FR grade
CONNECTION	DIN 43650A ISO 4400/6952
INDICATORS	1 LED (yellow) to indicate power ON 1 LED (yellow) to indicate OFF phase
DESIGN STANDARDS	VDE 01 10C

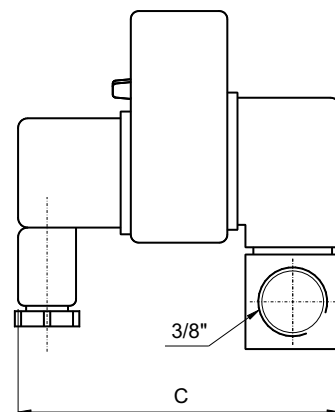
### VALVE

TYPE	2/2 - way direct / Internal Pilot acting valve
IN/OUT PORTS	3mm to 50mm (1/8" to 2")
MAXIMUM WORKING PRESSURE	10 Kg/cm <sup>2</sup> g. (High pressure upto 90Kg/cm <sup>2</sup> g available on request.
MIN/MAX TEMPERATURE	2°C/55°C ambient
MAX. MEDIA TEMPERATURE	90°C
VALVE ORIFICE	See chart
INSULATION	Class F (130°C)
ENVIRONMENTAL PROTECTION	IP 65
VOLTAGE	24V-240V Available
VOLTAGE TOLERANCE	See coil for correct voltage ± 10%
MOUNTING	IN ANY POSITION



Note :

- Other interval times are available on order.
- For DC operation terminal 1 must be connected to + supply.



**Shah Pneumatics** has a continuous policy of product development and although the Company reserves the right to change specifications, it attempts to keep customers informed of any alterations. This publication is for general information only and customers are requested to contact our Sales Department for detailed specifications and advice on a product's suitability for specific applications. All products are sold subject to the Company's standard conditions of sale.

**ProAir** is a trademark of **Shah Pneumatics**.

## Compressed Air Treatment Products

# Shah Pneumatics

28-30, NAVKETAN IND. ESTATE, MAHAKALI CAVES ROAD,  
ANDHERI-(E), MUMBAI-400093, INDIA.  
Ph:- +91-22-6695 1090, Fax:- +91-22-26875317,  
E-mail:- shahpneu@bom3.vsnl.net.in  
Website : www.shah-pneumatics.com

# ProAir

## MODEL - MEDV SERIES for Compressed Air Filters



This is designed to provide a solution for the automatic draining of filter bowls. The draining interval time can be adjusted to suit all sizes of filters.

### SIZES-MODELS

SIZES	3 mm (G 1/8")	6 mm (G 1/4")
MODEL	MEDV-01	MEDV-02
ORIFICE	1.5 mm	2.0 mm

## ELECTRONIC DRAIN VALVE

Compressed air filters remove oil, liquid, water and other contaminants. Solid contaminants are trapped in the filter cartridge, whilst the oil and water mixture passes through the cartridge and is collected at the bottom of the filter bowl. **Reliable removal of this oil and water (Condensate) is essential!**

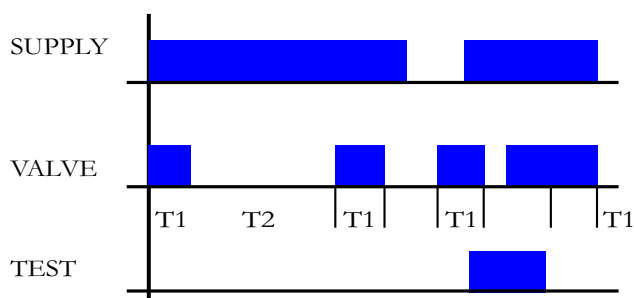
Float type drains are notoriously unreliable because they may either block up or continuously leak. **When float drains block or stick then the oil and water enters the filtered air again.**

As a result, compressed air systems become grossly contaminated and downstream processes seriously spoilt or disrupted.

The MEDV eliminates these risks by providing regular controlled drainage, on time, every time automatically.

The unit consist of a solid state timer coupled to a solenoid valve and only requires a simple installation procedure. The unit is designed exclusively for all compressed air filters, regardless of their capacity or size (1/8" to 1/4" connections size).

### FUNCTIONAL DIAGRAM



T1 drain open (on)  
T2 drain closed (off)

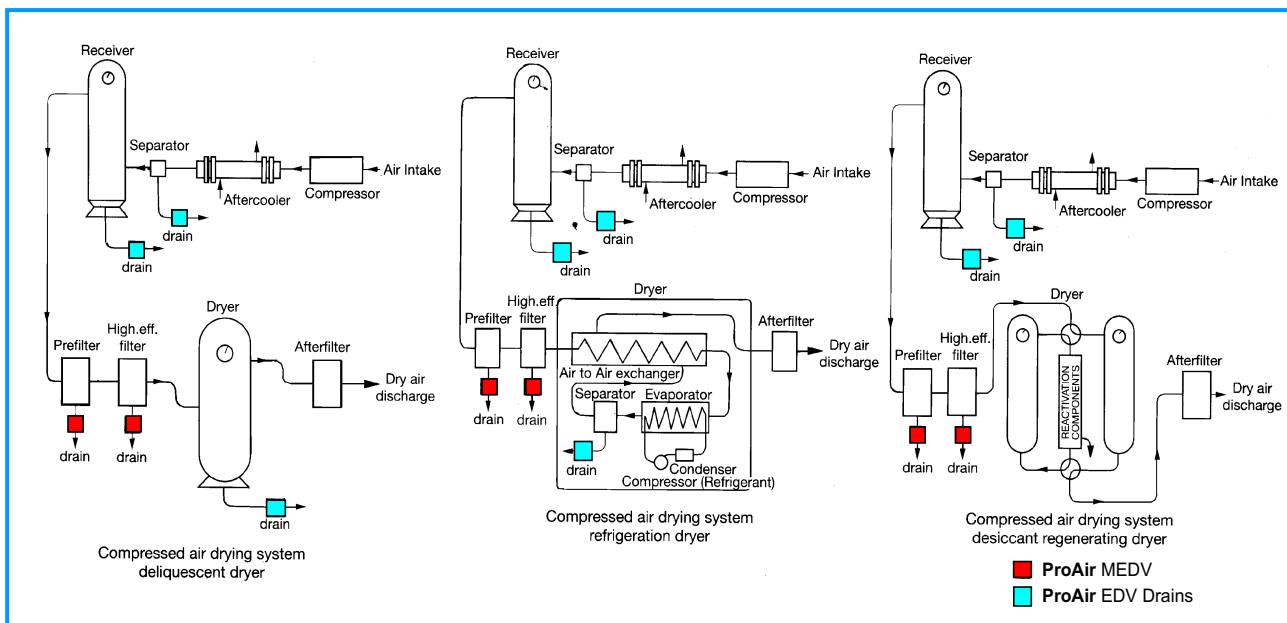
Note :

Other models available for drainage of multi-cartridge filters, separators, dryers, receivers, drip legs and other compressed air system components.

## Features

- Fully automatic - no maintenance
- Multi Voltage - 24-240 VAC/DC, 50Hz
- Simple to install
- IP 65 enclosure
- Adjustable interval time
- Test switch-for routine inspection and facilities
- Depressurisation for filter cartridge replacement
- Solid-state timer for long life and reliability
- LED indicator for Power ON
- Rugged ABS fire resistant housing
- Small compact design

# WHERE TO INSTALL THE **ProAir** DRAIN VALVE



## TIMER

## SPECIFICATIONS

## VALVE

### MANUAL TEST SWITCH

INTERVAL TIME T2(1)	1-120 minutes
DISCHARGE TIME T1 (1)	2 seconds
SUPPLY VOLTAGE (2)	24 to 240 VAC/DC
CURRENT CONSUMPTION	4mA maximum
OPERATING TEMPERATURE	-40°C TO +60°C
ENVIRONMENTAL PROTECTION	IP 65 when installed
CASE MATERIAL	ABS Plastic FR grade
CONNECTION	DIN 43650B
INDICATORS	LED to indicate Power ON
DESIGN STANDARD	VDE 01 10C

### TYPE

IN/OUT CONNECTION SIZE
MAXIMUM WORKING PRESSURE
MIN/MAX TEMPERATURE
MAX. MEDIA TEMPERATURE
VALVE BODY
INSULATION
ENVIRONMENTAL PROTECTION
VOLTAGE

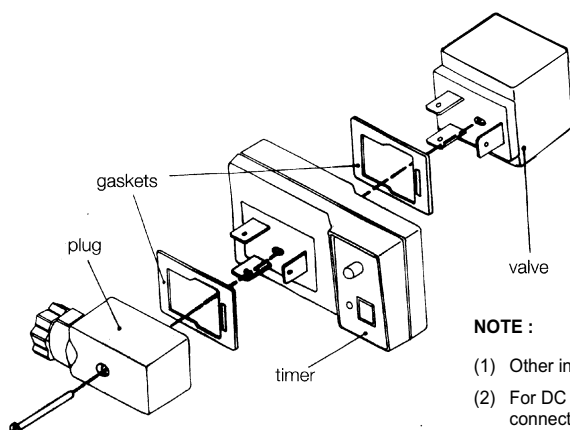
### 2/2 - way direct acting valve

3mm to 6mm (1/8" to 1/4")
10 Kg/Cm <sup>2</sup> g. (High pressure on request.)
2° C / 55° C ambient
90°C
Office 1.5 / 2.0 mm
Class F (130°C)
IP 65
24 V - 240 V available.
See coil for correct voltage
± 10%
IN ANY POSITION

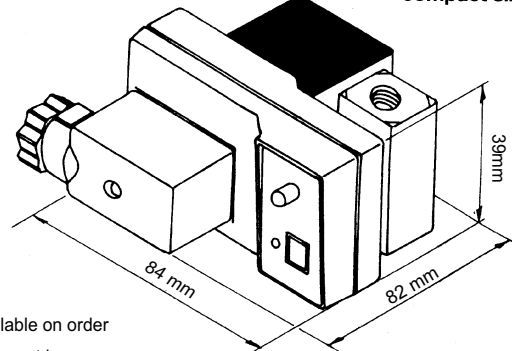
### VOLTAGE TOLERANCE

### MOUNTING

### modular assembly



### compact size



Shah Pneumatics has a continuous policy of product development and although the Company reserves the right to change specifications, it attempts to keep customers informed of any alterations. This publication is for general information only and customers are requested to contact our Sales Department for detailed specifications and advice on a product's suitability for specific applications. All products are sold subject to the Company's standard conditions of sale.

ProAir is a trademark of Shah Pneumatics.

## Compressed Air Treatment Products

## Shah Pneumatics

28-30, NAVKETAN IND. ESTATE, MAHAKALI CAVES ROAD,  
ANDHERI-(E), MUMBAI-400093, INDIA.  
Ph:- +91-22-6695 1090, Fax:- +91-22-26875317,  
E-mail:- shahpneu@bom3.vsnl.net.in  
Website : www.shah-pneumatics.com